

## Rationale

Policy administrators in India confront complex issues concerning population, health and development and are continually looking for ways to address them. While data is available, a user-friendly resource that has the ability to synthesize, analyze and visualize critical indicators in a geographically granular and policy-relevant manner has not been possible until now.

**India Policy Insights (IPI)** is a collaborative initiative created to:

- Support the Civil Services Officers in India to efficiently learn about the unique issues in their assigned states and districts
- Augment District Magistrates and Collectors and Field Cadre Officers' decision-making capabilities to identify and prioritize villages under their jurisdiction for implementation of national policies
- Enable policy makers at the Centre and across states in defining current and emerging issues based on a thorough analysis of data
- Empower elected officials to constructively engage with their constituents on individual and local health and well-being concerns

## What is India Policy Insights?

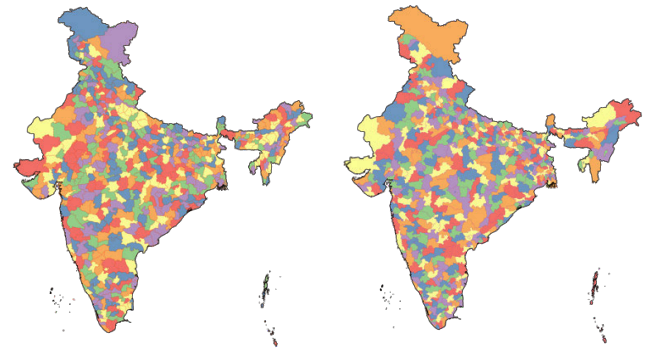
IPI is a comprehensive geovisual online data platform of policy-relevant population health and development indicators derived using novel statistical techniques at multiple geographic levels.

**Features include:**

- **Interactive Dashboards** to explore distribution of policy indicators at desired geographic levels, deep dive into specific areas, compare areas and indicators, and download summary reports.
- **Policy Metrics** related to population health and well-being indicators sourced from national programs (e.g., Anemia Mukh Bharat, Nikshay, POSHAN Abhiyaan), NITI Aayog's Aspirational Districts program and India-specific Sustainable Development Goals (SDGs).

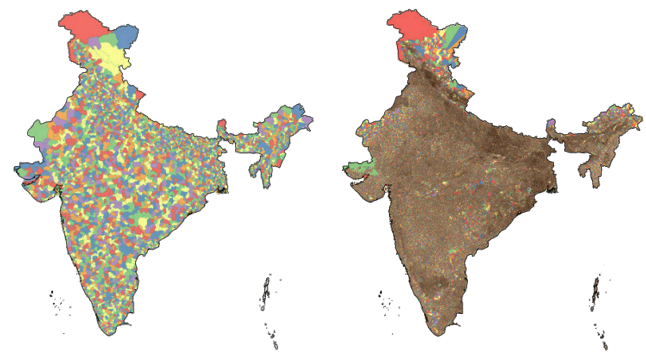


- **Geographic Visualizations and Analytics** for the following distinct policy units and target users:
  - Districts (*administrators/policy makers*)
  - Parliamentary and Assembly Constituencies (*elected representatives as well as the Prime Ministers' Office and Chief Ministers' Office*)
  - Sub-districts including Blocks, Villages/Gram Panchayats (*local administrative and elected officials*)



Districts

Parliamentary Constituencies



Assembly Constituencies

Villages

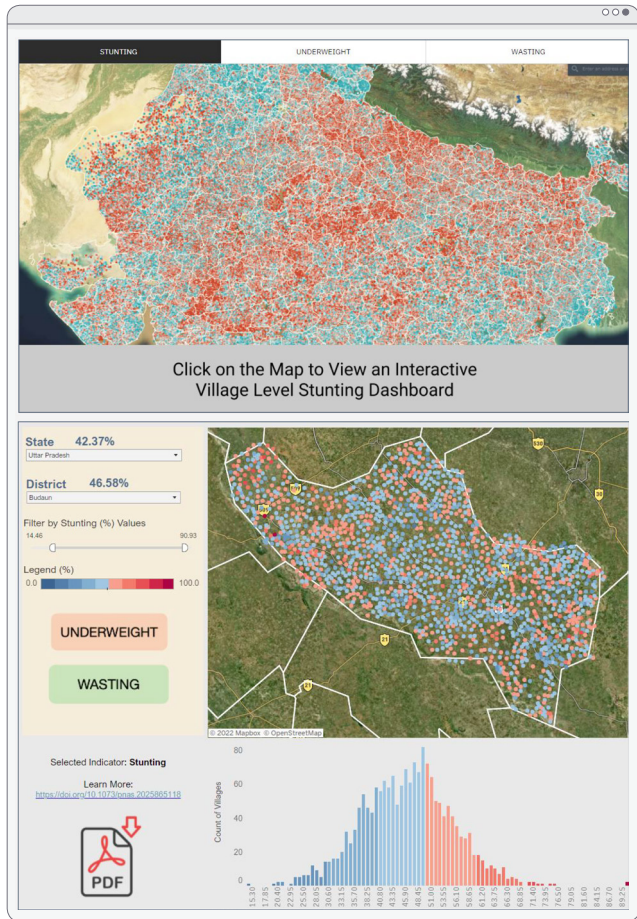
The overarching goal of IPI is to guide efficient resource allocation, targeted policy actions and performance monitoring.

IPI resources will be open access to the public for any use with appropriate attribution.

## Research Examples

Visit the [Geographic Insights Lab](#) to learn more about the scientific research underpinning the IPI, as well as work in progress geared towards the development of a standalone geovisual open and accessible IPI platform.

### Visualizing Village-level Child Undernutrition in India



<https://geographicinsights.iq.harvard.edu/village-undernutrition>

Using data from the 2015-16 Indian National Family Health Survey and the 2011 Indian Census, the dashboard visualizes for the first time ever the burden of child stunting, underweight, and wasting for all of the nearly 600,000 villages in rural India.

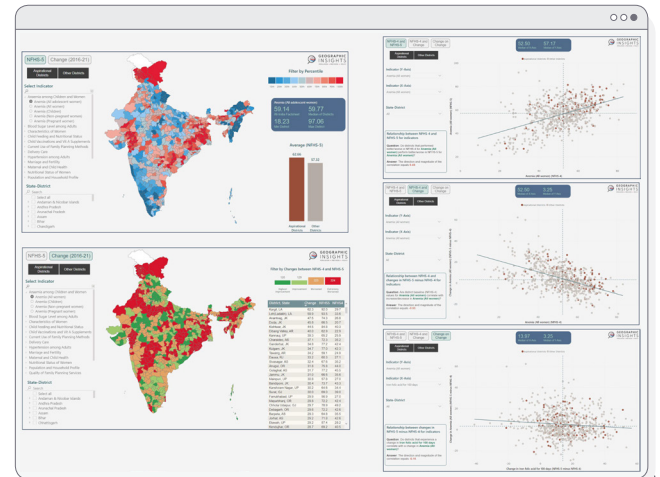
## Partners

IPI is led by the *Geographic Insights Lab* at the *Harvard Center for Population and Development Studies*, *Center for Geographic Analysis* at Harvard, and *Korea University*.

IPI's India partners are the *National Institution for Transforming India (NITI) Aayog* and the *International Institute for Population Sciences (IIPS)*.

For more information contact [Professor S V Subramanian](mailto:Professor S V Subramanian) at [geographicinsights@iq.harvard.edu](mailto:geographicinsights@iq.harvard.edu)

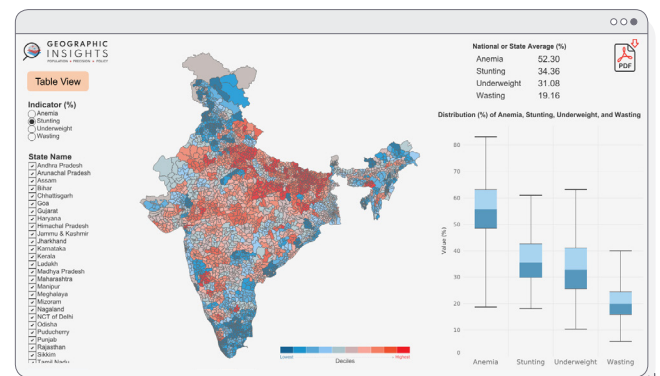
### NFHS Policy Tracker for Districts



<https://geographicinsights.iq.harvard.edu/nfhs-tracker-districts>

Leveraging NFHS-4 and NFHS-5 data, this interactive dashboard allows users to systematically visualize, compare and analyze over 80 policy relevant indicators for all districts of India.

### Visualizing Child Undernutrition across Assembly Constituencies in India



<https://geographicinsights.iq.harvard.edu/ac-undernutrition>

This interactive dashboard provides first ever estimates of child stunting, underweight, wasting and anemia for all of the nearly 4,000 Assembly Constituencies in India. This dashboard is specifically designed to enable elected representatives to engage in reducing the burden of child undernutrition in their constituencies.